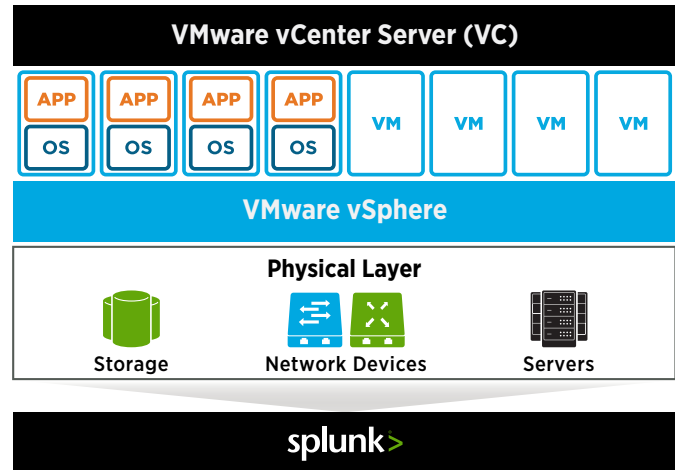


# SPLUNK® APP FOR VMWARE

Unlock the value of your VMware vSphere data

- **Gain cross-tier visibility** and operational analytics for your VMware infrastructure
- **Analyze the impact** of changes, tasks and events to performance and uptime
- **Gain immediate insights** from an interactive map of your VMware topology
- **Find suspicious user activity**, track potential attacks and audit user-initiated changes in your virtual infrastructure

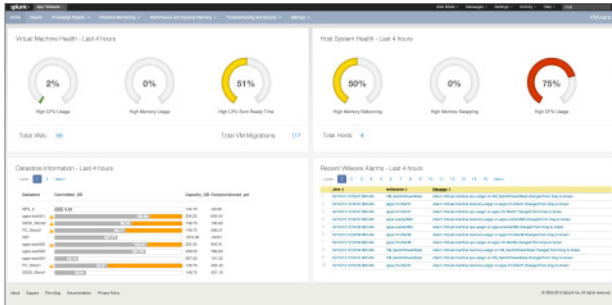


With the rapid adoption of virtualization in the datacenter, IT administrators now have new operational challenges on their plate. If you're an IT administrator, you likely wrestle with limited control of virtual machine performance and security, incomplete usage analytics, and an inability to compare virtualization performance to other IT layers.

Enter the Splunk App for VMware. The app delivers deep visibility into performance metrics, logs, tasks, events and topology from hosts, virtual machines and virtual centers. It enables easy correlation of data with information from any other tier of your technology stack, such as applications, operating systems, servers, storage and more.

## With the Splunk App for VMware, you can:

- **Visualize operational health** with immediate detection of underperforming or distressed hosts, VMs and data stores
- **Access interactive maps** highlighting issues and statistical comparisons based on predefined, customizable thresholds
- **Accelerate troubleshooting, optimize capacity and streamline workloads** with out-of-the-box correlation between VMware and NetApp Data ONTAP storage
- **Analyze resource utilization, optimize and forecast future capacity** using predictive algorithms
- **Gain visibility into potential security incidents** and non-compliant usage patterns
- **Correlate data from virtual infrastructures** with data across your entire IT stack for end-to-end visibility



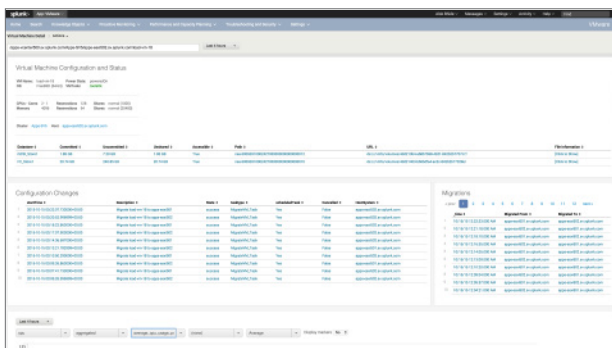
### Operational Health Summary

Get immediate visibility into the workload and health of your VMware environment. Identify VMs that are waiting on CPU or memory resources, hosts that are over- or under-used, and data stores that are running out of capacity.



### Interactive Topology Views

Use a visual interactive map of your VMware topology to gain immediate insights into the health of individual nodes (clusters, VCs, hosts or VMs) based on predefined thresholds. Instantly detect outliers, visualize trends and compare virtual entities and performance metrics to understand patterns over time.



### Capacity Reporting

Proactively set alerts for real-time capacity monitoring, so you can assess capacity risk. Optimize your resource utilization by establishing baselines, understanding capacity usage, trending analysis, and identifying capacity shortfalls. Forecast CPU, memory and disk capacity needs and performance levels of hosts, VMs and data stores.



### Correlation Across Virtual and Physical Infrastructures

Combine your virtualization data with data from all other technology tiers—including applications, operating systems, storage, networks and servers—to gain a complete, central view of KPIs of your datacenter. Identify under- or over-used storage resources, disk IOPS by ESXi hosts/VMs and discover hidden performance problems and capacity constraints.

Download Splunk for free or explore the online sandbox. Whether cloud, on-premises, or for large or small teams, Splunk has a deployment model that will fit your needs. [Learn more.](#)



Learn more: [www.splunk.com/asksales](http://www.splunk.com/asksales)

[www.splunk.com](http://www.splunk.com)